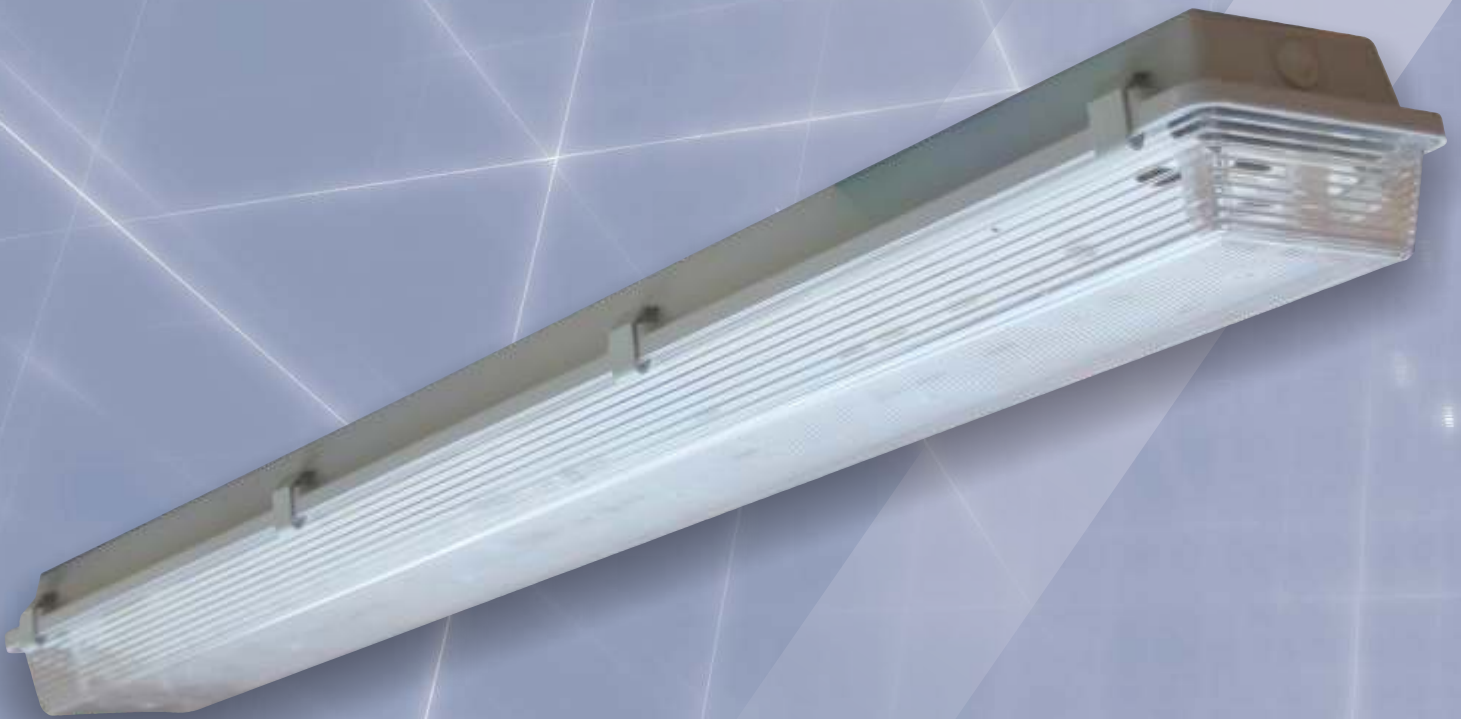




JBLT LED



The **JBLT LED** linear luminaire range is a high-performance industrial vapour proof DMC, glass fibre reinforced polyester luminaire that has been designed to operate T8 LED tubes. It's suitable for wall, ceiling, bracket and pole mounting. The **JBLT LED** continues the proud heritage of RAMIKA PROJECTS quality standards.



RAMIKA PROJECTS

JBLT LED

Applications: All non-hazardous areas, Industrial sites, Warehouses, Public Buildings, Underground Parking areas and Various Mining areas.

Body: Manufactured from DMC, compression moulded glass fibre reinforced polyester.

Clips: Polyamide clips supplied as standard. Stainless steel or vandal resistant stainless steel clips available on request.

Lens: Injection moulded clear polycarbonate lens with linear internal prisms.

Gasket: Silicone sponge gasket.

Control Gear: White epoxy coated gear tray carries the lamp holders. The gear tray is designed to operate T8 LED tubes. Two cords allow the gear tray to be suspended from the body during installation and service.

Note: Lightning Protection: All electronic products such as light fittings and computers are subject to violent destruction when struck by lightning. An independent lightning protection device, well earthed, needs to be inserted in the supply line before the lighting circuit, where any electronic control gear is used in light fittings. Control gear damaged by lightning is not covered under guarantee.

Cable Entry: Two 20mm diameter cable entries are provided for through wiring. Plugs are supplied for blanking off cable entries. Glands are not provided.

Mounting:

- IP65: Optional stainless steel hanging brackets available on request.
- IP66: Brass body inserts allows for hook, wall/ceiling brackets or pole clamps to be used.

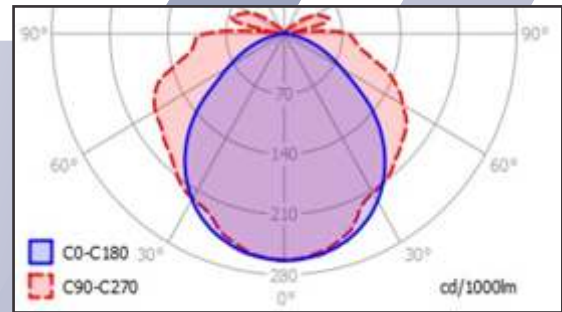
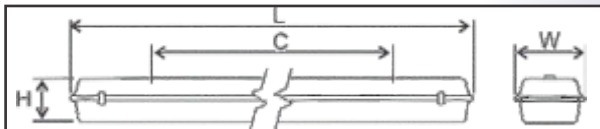
Ambient Temperature Rating: -10°C - +45°C

Ingress Protection Grade: IP65 standard/IP66 on request.

Emergency Mode: Emergency options available on request.

Photometric Data: Photometric files available on request.

Warranty: 1 Year



Please Note:

Wired gear trays are available separately for all the below mentioned models.

Model Name	JBLT LED (*) 2ft (600mm)	JBLT LED (**) 4ft (1200mm)	JBLT LED (**) 5ft (1500mm)
Rated Wattage(W)	2x8W T8 LED	2x18W T8 LED	2x24W T8 LED
Luminous Efficacy (system)	100lm/W	100lm/W	100lm/W
Luminous Flux (system)	1600lm	3600lm	4800lm
Colour Temperature	6500K	4500K	4500K
Colour Rendering Index	>Ra82	>Ra82	>Ra82
Rated Voltage	220V-240V AC, 50/60Hz	100V-240V AC, 50/60Hz	100V-240V AC, 50/60Hz
Ambient Temperature	-10°C to +45°C	-10°C to +45°C	-10°C to +45°C
Power Factor	N/A	N/A	N/A
Rated Lifetime	15 000 Hr.	35 000 Hr.	35 000 Hr.
Installation	Wall, Ceiling, Bracket and Pole mounting		
Ingress Protection Grade	IP65		
Dimensions	L x W x H	L x W x H	L x W x H
	700x172x115mm	1310x172x115mm	1610x172x115mm
Fixing Centres (FC)	500mm	800mm	1100mm
Weight	4kg	5kg	7kg

(*) Data provided is based on the specifications for the Philips LED tube.

(**) Data provided is based on the specifications for the Nordland LED tube.

Ramika Projects reserves the right to change any specification or design without prior notice.