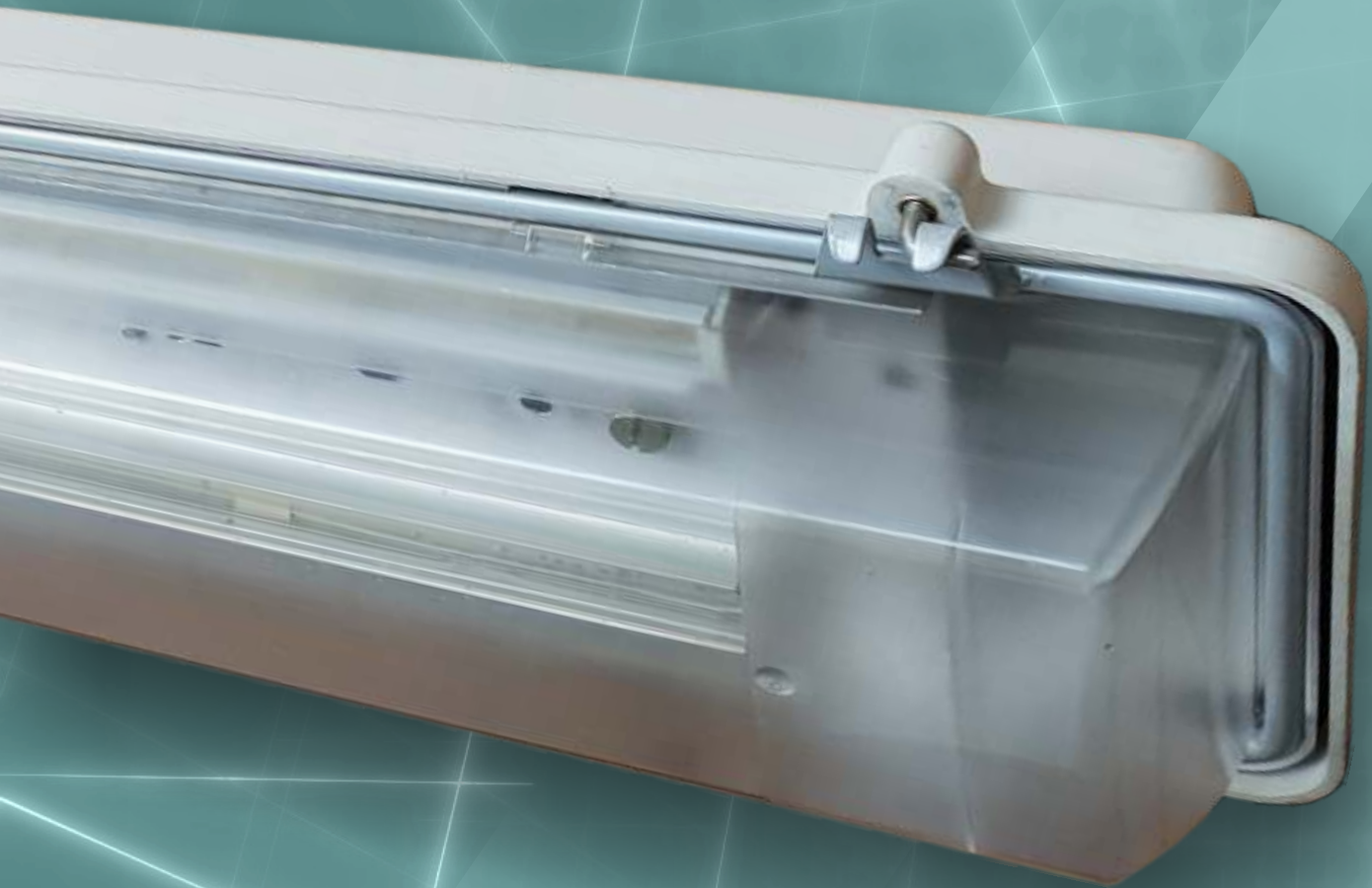




# NLED-Ex

Zone 1, 2, 21 & 22



The **NLED-Ex** linear luminaire range uses specially designed LED light sources and is paired with Ex certified LED drivers. The luminaire is designed to replace the conventional fluorescent lamps which makes it energy efficient with high performance, low maintenance and long life span. It's suitable for wall, ceiling, bracket and pole mounting. The **NLED-Ex** continues the proud heritage of RAMIKA PROJECTS Ex safety standards whilst utilizing the latest LED technology.



**RAMIKA PROJECTS**

SA Pat Appl No. 2018/06027

## NLED-Ex

**Applications:** Zone 1, 2, 21 & 22 Hazardous locations.

**Body:** Manufactured from GRP Glass Fibre reinforced polyester, by means of a compression moulded process.

**Diffuser:** Available with a clear or frosted polycarbonate diffuser.

**Gasket:** Continuous neoprene gasket insures IP66 seal between the body and diffuser.

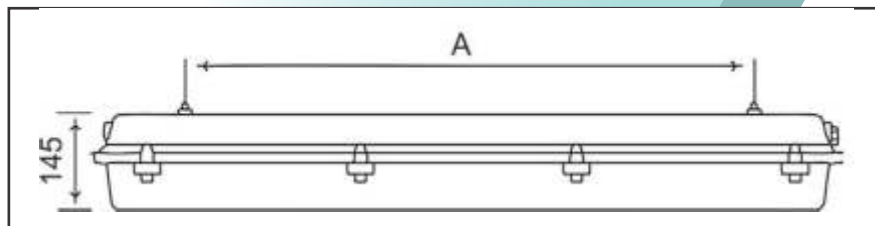
**Control Gear:** Aluminium gear tray carries the LED driver and LED strips. Two cords allow the gear tray to be suspended from the body during installation and service.

**Note:** Lightning Protection: All electronic products such as light fittings and computers are subject to violent destruction when struck by lightning. An independent lightning protection device, well earthed, needs to be inserted in the supply line before the lighting circuit, where any electronic control gear is used in light fittings. Control gear damaged by lightning is not covered under guarantee.

**Cable Entry:** Comes standard with an Ex e compression gland. Cable diameter 6 – 12 mm. Also available with a No 1/0 gland for armoured cable. Incoming terminal size max 2x4 mm<sup>2</sup>.

**Mounting:** Supplied with two 8mm body inserts in rear of the luminaire. Suitable for wall / ceiling brackets & pole clamps. Supplied with M8 hooks as standard.

**Warranty:** 5 Years



Model Name	NLED-Ex 2ft (600mm)	NLED-Ex 2ft (600mm)	NLED-Ex 4ft (1200mm)	NLED-Ex 4ft (1200mm)	NLED-Ex 5ft (1500mm)	NLED-Ex 5ft (1500mm)
<b>Amperage</b>	350mA	500mA	350mA	500mA	350mA	500mA
<b>Rated Wattage(W)</b>	36W	51W	67W	98W	67W	98W
<b>Luminous Efficacy (system)</b>	92lm/W	92lm/W	95lm/W	94lm/W	95lm/W	94lm/W
<b>Luminous Flux (system)</b>	3312lm	4692lm	6365lm	9212lm	6365lm	9212lm
<b>Colour Temperature</b>	4000K					
<b>Colour Rendering Index</b>	>Ra80					
<b>Rated Voltage</b>	220V-240V AC, 50/60Hz					
<b>Ingress Protection Grade</b>	IP66					
<b>Ambient Temperature</b>	-20°C to +40°C					
<b>Power Factor</b>	>0,90					
<b>Rated Lifetime</b>	50 000 Hr.					
<b>Installation</b>	Wall, Ceiling, Bracket and Pole mounting					
<b>Dimensions</b>	L x W x H		L x W x H		L x W x H	
	794x176x145mm		1400x176x145mm		1704x176x145mm	
<b>Fixing Centres (A)</b>	480mm		1085mm		1390mm	
<b>Classification</b>	Zone 1 - Zone 2 (Gas) & Zone 21 - Zone 22 (Dust)					
<b>Ex-mark</b>	Ex e mb IIC T4 Gb IP66 / Ex tb IIIC T135°C Db IP66					

Ramika Projects reserves the right to change any specification or design without prior notice.