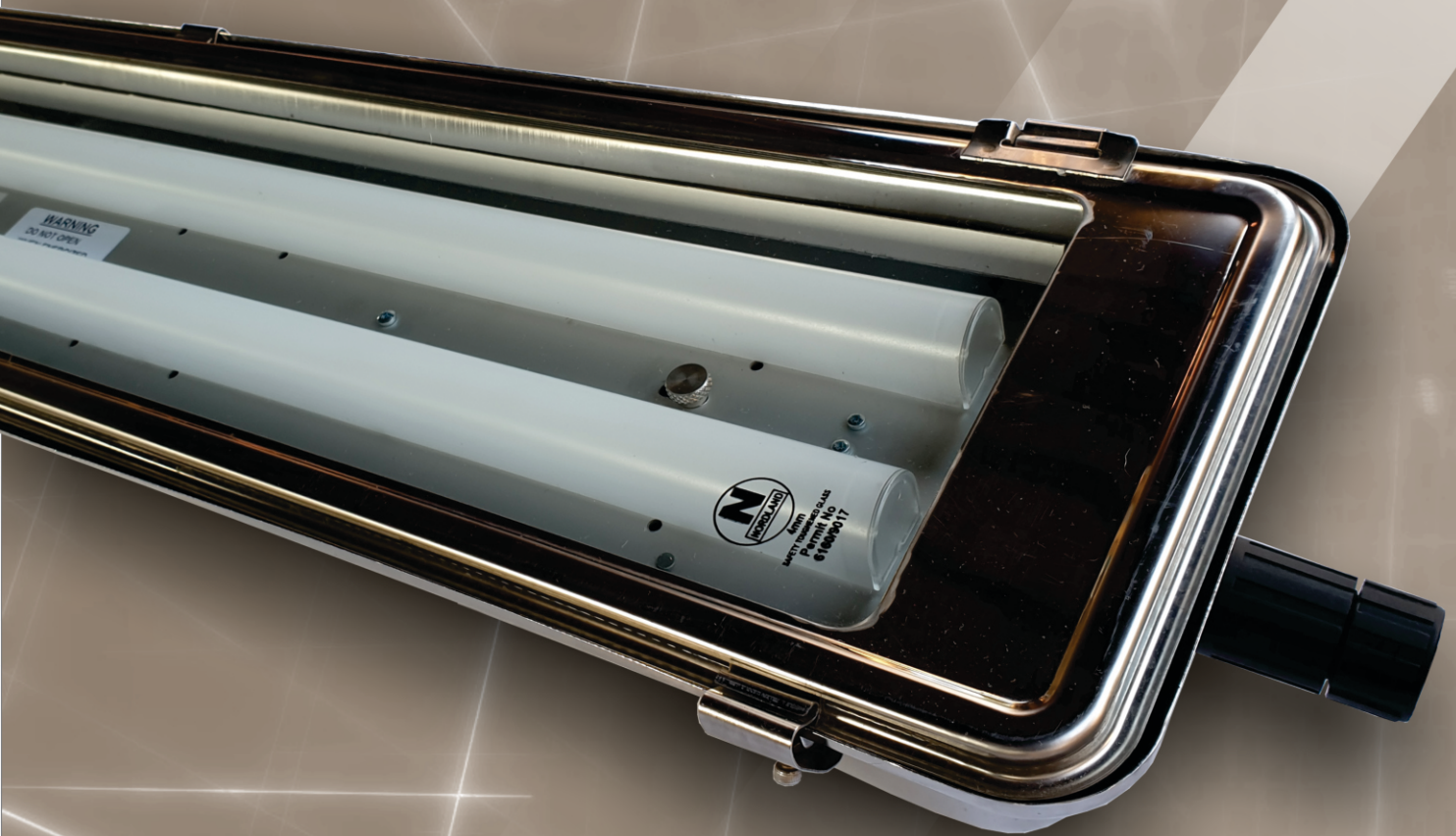




N50-Exn LED 600/1200

Zone 2, 21 & 22



The **N50-Exn LED** linear luminaire range is a high-performance LED industrial stainless steel luminaire and is certified for use in Zone 2, 21 and 22 hazardous environments. The luminaire is designed to replace the conventional fluorescent lamps which makes it energy efficient with high performance, low maintenance and longer life span. It's suitable for wall, ceiling, bracket and pole mounting. The **N50-Exn LED** continues the proud heritage of RAMIKA PROJECTS Ex safety standards whilst utilizing the latest LED technology.



RAMIKA PROJECTS

N50-Exn LED 600/1200

Applications: Zone 2, 21 & 22 Hazardous locations, and highly corrosive areas.

Body: Manufactured from Stainless steel grade 304. Marine grade 316 available on special order. The single piece deep drawn body may not be drilled on site.

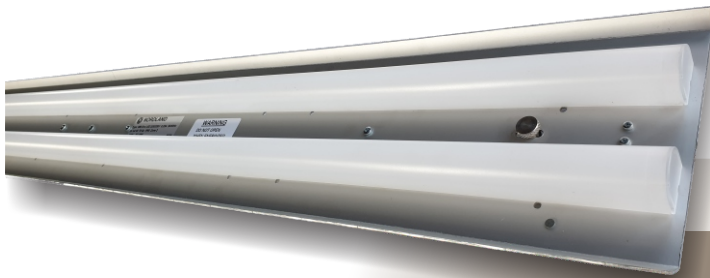
Clips: Double acting stainless steel clips with M4 socket head screws on outer clips.

Lens: 4mm thick clear tempered plate glass.

Gasket: Extruded silicone one piece gasket.

Lens Frame: Pressed from a single piece stainless steel sheet without joining welds and with extra wide ends for increased rigidity.

Frame Suspension: The lens frame is suspended on two points along one side of the body to allow the glass frame to swing open during servicing.



Control Gear: Aluminium gear tray carries the LED driver and LED strips, and is also designed to act as a reflector. Two cords allow the gear tray to be suspended from the body during installation and service.

Cable Entry: Threaded 20 mm entry provided for a gland via a special welded insert boss is positioned about 60mm from the mounting surface to facilitate installation. Corrosion resistant glands are recommended for use with stainless steel light fittings. Single gland entry standard. Through wiring option available on request for 47W 4ft only.

Mounting: 8mm threaded nut welded into the rear mounting brackets allows the luminaire to be mounted using either brackets, or pole clamps.

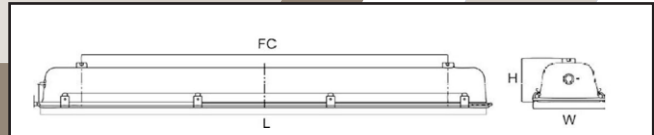
Wire Guard: A stainless steel wire guard is available as an optional extra on the 4ft version only.

Emergency Mode: Emergency option available on request. (6W output for 1 hour)

Warranty: 5 Years

Please Note:

Wired gear trays are available separately for all the below mentioned models.



Note: Lightning Protection: All electronic products such as light fittings and computers are subject to violent destruction when struck by lightning. An independent lightning protection device, well earthed, needs to be inserted in the supply line before the lighting circuit, where any electronic control gear is used in light fittings. Control gear damaged by lightning is not covered under guarantee.

Model Name	N50-Exn LED 2ft (600mm)	N50-Exn LED 4ft (1200mm)	N50-Exn LED 4ft (1200mm)
Amperage	250mA	400mA	250mA
Rated Wattage(W)	25W	35W	47W
Luminous Efficacy (system)	100lm/W	108lm/W	111lm/W
Luminous Flux (system)	2507lm	3772lm	5217lm
Colour Temperature	5000K		
Colour Rendering Index	>Ra80		
Rated Voltage	220V-240V AC, 50/60Hz		
Ingress Protection Grade	IP65		
Ambient Temperature	-20°C to +40°C		
Power Factor	>0,96		
Rated Lifetime	50 000 Hr.		
Installation	Wall, Ceiling, Bracket and Pole mounting		
Dimensions	L x W x H	L x W x H	L x W x H
	790x219x135mm	1370x219x135mm	1370x219x135mm
Fixing Centres (FC)	490mm	1100mm	1100mm
Weight	6.5kg	10.3kg	10.3kg
Classification	Zone 2 (Gas) & Zone 21 - Zone 22 (Dust)		
Ex-mark	Ex e nC IIC T5 Gc IP65 / Ex tb IIIC T100°C Db IP65		

Ramika Projects reserves the right to change any specification or design without prior notice.