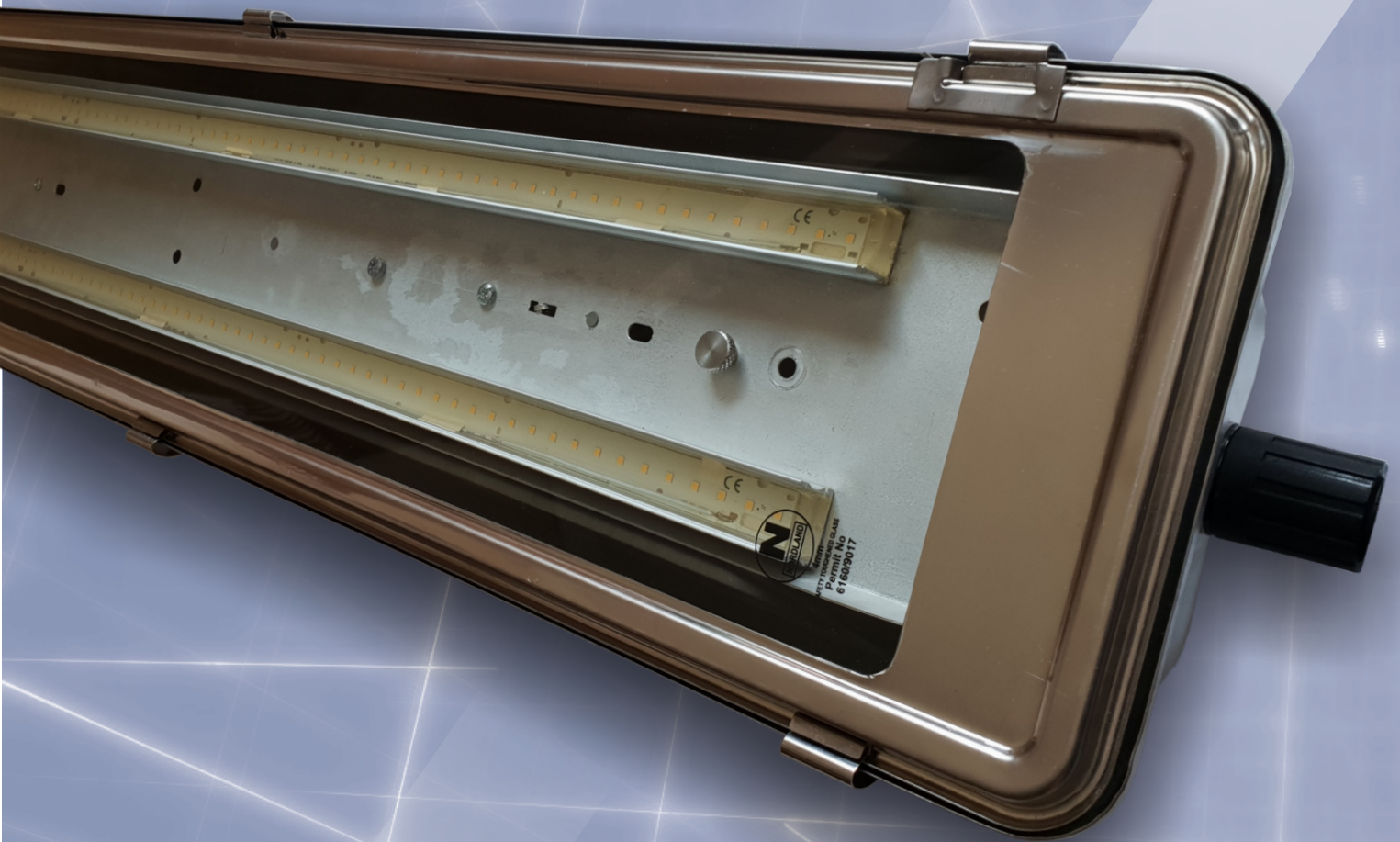




# N60LED-Ex

Zone 1, 2, 21 & 22



The **N60LED-Ex** linear luminaire range uses specially designed LED light sources and is paired with Ex certified LED drivers. The luminaire is designed to replace the conventional fluorescent lamps which makes it energy efficient with high performance, low maintenance and long life span. It's suitable for wall, ceiling, bracket and pole mounting. The **N60LED-Ex** continues the proud heritage of RAMIKA PROJECTS Ex safety standards whilst utilizing the latest LED technology.



**RAMIKA PROJECTS**

SA Pat Appl No. 2018/06027

## N60LED-Ex

**Applications:** Zone 1, 2, 21 & 22 Hazardous locations, and highly corrosive areas.

**Body:** Manufactured from Stainless steel grade 304. Marine grade 316 available on special order. The single piece deep drawn body may not be drilled on site.

**Clips:** Double acting stainless steel with M4 socket head screws on outer clips.

**Lens:** 4mm thick clear tempered plate glass.

**Gasket:** Extruded silicone one piece gasket.

**Lens Frame:** Pressed from a single piece stainless steel sheet without joining welds and with extra wide ends for increased rigidity.

**Frame Suspension:** The lens frame is suspended on two points along one side of the body to allow the glass frame to swing open during servicing.

**Note:** Lightning Protection: All electronic products such as light fittings and computers are subject to violent destruction when struck by lightning. An independent lightning protection device, well earthed, needs to be inserted in the supply line before the lighting circuit, where any electronic control gear is used in light fittings. Control gear damaged by lightning is not covered under guarantee.

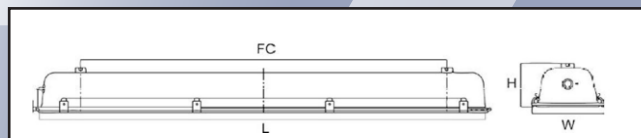
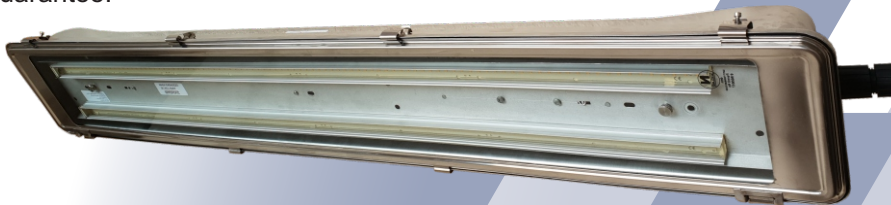
**Control Gear:** Aluminium gear tray carries the LED driver and LED strips. Two cords allow the gear tray to be suspended from the body during installation and service.

**Cable Entry:** Threaded 20 mm entry provided for a gland via a special welded insert boss is positioned about 60mm from the mounting surface to facilitate installation. Corrosion resistant glands are recommended for use with stainless steel light fittings. Single gland entry standard, twin gland entry available as option. Through wiring option available on request.

**Mounting:** 8mm threaded nut welded into the rear mounting brackets allows the luminaire to be mounted using either brackets, or pole clamps.

**Wire Guard:** A stainless steel wire guard is available as an optional extra on the 4ft version only.

**Warranty:** 5 Years



Model Name	N60LED-Ex 2ft (600mm)	N60LED-Ex 2ft (600mm)	N60LED-Ex 4ft (1200mm)	N60LED-Ex 4ft (1200mm)
Amperage	350mA	500mA	350mA	500mA
Rated Wattage(W)	35W	51W	67W	98W
Luminous Efficacy (system)	90lm/W	90lm/W	91lm/W	90lm/W
Luminous Flux (system)	3240lm	4590lm	6097lm	8820lm
Colour Temperature	4000K			
Colour Rendering Index	>Ra80			
Rated Voltage	220V-240V AC, 50/60Hz			
Ingress Protection Grade	IP65			
Ambient Temperature	-20°C to +40°C			
Power Factor	>0,90			
Rated Lifetime	50 000 Hr.			
Installation	Wall, Ceiling, Bracket and Pole mounting			
Dimensions	L x W x H		L x W x H	
	790x219x135mm		1370x219x135mm	
Fixing Centres (FC)	490mm		1100mm	
Classification	Zone 1 - Zone 2 (Gas) & Zone 21 - Zone 22 (Dust)			
Ex-mark	Ex e mb IIC T4 Gb IP65 / Ex tb IIIC T135°C Db IP65			

Ramika Projects reserves the right to change any specification or design without prior notice.